

GILCHRIST FARMS & FRIENDS



**IN IT
TO**

WIN



IT 10TH ANNUAL
PRODUCTION SALE

SATURDAY
OCT. 9
1:00 PM ▼ LUCKNOW, ONTARIO

2021



A decade.

A decade of friendship and comradery, a decade of elite Angus genetics, a decade of In It To Win It.

10 years seems like a long time when you are looking forward, but looking back over the past 10 years it went by so fast.

Many things have changed in the past 10 years, the cattle, loved ones who have passed and the next generation born. But the reason the past moves so quickly is the fact that we love what we do. We love seeing old friends, meeting new ones and building memories as we go. It's not about where we started or where we are in the cattle business but the path taken as we live out our dream. As we travel along this path from the start

of this sale in 2012, the sale name hasn't just been words on paper, but a slogan to live by. It doesn't refer to taking home banners from a show, but rather a mindset. A mindset of no matter what the task always do the best you can with what you have, and if you are going to partake in something, put everything you have into it and success will come.

We wouldn't be where we are today without the support of the buyers, consignors, family, and friends. And from the bottom of our hearts, thank you for an amazing 10 years of In It To Win It and I look forward to all of the stories, memories and friendships that will be generated as we move forward.

BRAD, KRISTIE AND PEYTON GILCHRIST

Gilchrist Farms



Gilchrist Farms

1269 Grey Ox Avenue
RR 5, Lucknow, ON N0G 2H0

brad@gilchristfarms.com

Cell: 519-440-6720

www.GilchristFarms.com

FROM THE DESK AT T BAR...

The crew at GF are pulling out all the stops this year for the 10th annual event. It's hard to believe 10 years ago we started this nationally recognized sale in the old shed, and now have moved into the beautiful new sale facility here in Lucknow.

The offering this year is flat awesome. When I say pulling out all the stops, I truly mean it. Of course how fitting that the catalog starts off with the famed Evening Tinge cow family, that has been so good to so many for so long. The history is rich and the lead off calf and bred are certainly worthy of serious consideration. The bred females within the sale selections are very appealing to any breeder. Young cows and breds that all have the credentials to be a popular sale entry. As always the heifer calves that will be holding their heads up around the carousel are always a sale feature. This section of the sale has probably never been so deep, so please come hang inside the sale barn around these beauties under the bright lights at GF.

New this year is the exciting offering from the great people at ICF. No matter what colour of cattle you like, you will find some of the most gorgeous females grazing the hills of Paisley, Ontario at ICF. The cattle they have assembled are jaw dropping good with as many people talking about these cattle from summer tours as you'll hear about. Uniquely pedigreed with extreme phenotype... plan to look this set over.

As always, please make all efforts to join us Thanksgiving Saturday in Lucknow for not only great cattle, but a fun experience. You'll notice a few changes around the yard at GF that will have you impressed of the GF name and the In It To Win It anniversary. Any questions or if you are needing any help, please call any of us at T Bar!

BEN WRIGHT



CHRIS POLEY
306-220-5006



SHANE MICHELSON
403-363-9973



BEN WRIGHT
519-374-3335



SALE DAY INFORMATION...

SALES STAFF...

Auctioneer...

Chris Poley 306-220-5006

Ringmen...

Ben Wright 519-374-3335

Shane Michelson 403-363-9973

SALE DAY PHONES...

Ben Wright 519-374-3335

Shane Michelson 403-363-9973

Chris Poley 306-220-5006

Brad Gilchrist 519-440-6720

TRUCKING...

H.S. Knill Company 877-442-3106

PRE SALE VIEWING...

Friday all day and Saturday morning prior to the sale. Please join us for lunch Saturday at 11:30 AM.

Refreshments available

PLEASE NOTE...

Absolutely no loading of cattle until the conclusion of the sale.

For service/information in French,
please contact

Kristie Gilchrist at 519-998-5696

Pour le service ou l'information en
français, svp contactez

Kristie Gilchrist à 519-998-5696

ONLINE BIDDING...

Mark Shologan 780-699-5082



HOTEL ACCOMODATIONS...

Sommerville Court Motel Bed & Breakfast

Lucknow, ON 866-863-2557

Best Western Plus Governor's Inn

Kincardine, ON 519-396-8242

DIRECTIONS...

Address: 1269 Grey Ox Ave
Lucknow ON

From Lucknow head North on County Road 1 to 2nd corner (Grey Ox Ave) turn left or west, 4th place on the left.

CATALOGUE DESIGNED BY...

Today's Publishing

VIEW CATALOGUE ONLINE...

www.BuyAgro.com

AIRPORT...

Toronto International Airport

London International Airport

Region of Waterloo International Airport





GF EVENING TINGE 204A



GF EVENING TINGE 204A



GF EVENING TINGE 17B



GF STARDOM 71F



CHAMPION PROGENY OF DAM
GF EVENING TINGE 17B



PCC ACES LADY LUCK



J6RA BADA BING 1602B



JL EVENING TINGE 1282



GF EVENING TINGE 1X



GF EVENING TINGE 81F



GF EVENING TINGE 1X



GF EVENING TINGE 81A



J6RA TINGE 6546D



GF EVENING TINGE 81C



2

CONLEY EVENING TINGE 143G



GF LAZY MC FULL PULL 81E



GF VERDICT 71D



GF EVENING TINGE 1X

THE TINGE STORY

10 years of In it to win it sales, and 10 years of Evening Tinge leaving her mark on the industry. GF Evening Tinge 1X was born January 16, 2010 and made her public debut at the Rockton Worlds Fair where she was Grand Champion Female, following what her dam had done the year before as a bred at the same show. In the backdrop, the Tinge Legacy began to blossom and by the time she was back at the stall she was sold and headed to the US. Nowatzke Cattle, Conley Angus and J6 Ranch took ownership and over the next few months this female went on a mission. A mission collecting banners and turning heads. Senior Calf Division Champion RAWF 2010, Reserve Grand Female RAWF 2010, Division Champion at the NWSS 2011 and Grand Champion Female as a bred at the American Royal 2011. As a young Angus breeder, I was absolutely blown away by her success and was eagerly waiting to see what both GF Evening Tinge 1X and her Dam JL Evening Tinge 8001 were going to produce with their American passports stamped.

Her dam was no stranger to the ring either. She was named Ontario show female of the year in 2009 while carrying the pregnancy of GF Evening Tinge 1X

THE ACCOMPLISHMENTS OF GF EVENING TINGE 1X:

- Reserve Grand RAWF 2010
- Division Champion NWSS 2011
- Champion Female American Royal 2011
- Progeny J6RA Ms Rachel 712B sold for \$120,000
- Progeny J6RA Bada Bing 1602B Grand Champion Percentage Simmental Female 2015 NAILE and the American Royal
- Progeny "Bobbi" sold for \$40,000

THE ACCOMPLISHMENTS OF JL EVENING TINGE 8001:

- Ontario Show Female Of The Year 2009
- Progeny GF Evening Tinge 1X
- Progeny PCC Witten 111A
- Progeny R&R PCC Aspect 225Z
- Progeny Gf Evening Tinge 17Y
- Progeny GF Evening Tinge 204A
- Progeny GF Evening Tinge 81A

THE ACCOMPLISHMENTS OF HF EVENING TINGE 57R:

- 66 registered progeny
- JLMB 618A \$22,000
- JLMB 617A \$17,000
- JLMB 128X \$37,000
- RHFL 5H \$15,500
- JLMB 110C \$26,000



GF EVENING TINGE 1X



JL EVENING TINGE 8001



JL EVENING TINGE 8001

▼ **BW: 94 lbs.** An elite heifer that carries the Evening Tinge name and all of the prestige, credentials and story in this never-ending book of accomplishments it has to offer. Sired by Powerchip, who ranked in the top 10 of the American Angus show sires of the year for 2020. Her dam is a full sister to GF Evening Tinge 1X who was Div Champion at the NWSS but more importantly she has been producing champions year after year for nearly a decade now. This is your chance to write your own chapter in the Evening Tinge story and elevate your program with a Tinge like they have for so many others. **Selling one half interest with the option to double the bid and own her all. Consigned by Gilchrist Farms**



GF EVENING TINGE 8001J

▼ Female ▼ 2215966 ▼ GFA 8001J ▼ Jan. 13/21

EXAR BLUE CHIP 1877B
 5T POWER CHIP 4790
 5T MISS WIX 8002
 LEACHMAN SAUGAHATCHEE 3000C
 GF EVENING TINGE 8001E
 JL EVENING TINGE 8001



EPDS	CE	BW	WW	YW	MILK
	4.5	2.5	62	105	25



Progeny Of Dam



Full Sister to Dam



Full Sister to Dam



Grand Dam

Evening Tinge! This ET daughter by Lookout is as good as they come and selected straight from the top of the pen. Her dam is a full sister to GF Evening Tinge 1X and has become a donor who is building her own legacy. A maternal sister sold this past spring for Holinger Land and Cattle for \$15,000. GF Evening Tinge 7H has loads of lower quarter shape and coupled with an extended front 1/3 level chest floor and big barrel. **AI bred to Cardinal Cash Advance 60F on May 12, 2021. Due to calve on February 18, 2022 Consigned by Gilchrist Farms.**



GF EVENING TINGE 7H

▼ Female ▼ 2215870 ▼ GFA 7H ▼ Jan. 17/20

O C C LEGEND 616L
 B C LOOKOUT 7024
 GIBBET HILL MIGNONNE E37
 LEACHMAN SAUGAHATCHEE 3000C
 GF EVENING TINGE 81A
 JL EVENING TINGE 8001



EPDS	CE	BW	WW	YW	MILK
	-2.5	3.5	53	86	27



Dam



Maternal Brother



Maternal Sister



Maternal Sister

If you like attractive females with extension that are chucked full of muscle expression and pin width then this one sorts herself to the top of the class with ease. Sired by the legend himself Saugahatchee, he has been making females like this for decades and this one has a bolted on udder one has come to expect from his progeny. We are retaining the right to one flush on this great female and will be happy promoting her progeny for the future owners. Her 2021 son will be retained for our 2022 bull sale. **AI bred to Cardinal Cash Advance 60F on March 25, 2021. Due to calve on January 1, 2022. Consigned by Gilchrist Farms**



GF BLACKBIRD 304B

▼ Female ▼ 1799850 ▼ GFA 304B ▼ Jan. 29/14

N BAR EMULATION EXT
 LEACHMAN SAUGAHATCHEE 3000C
 LEACHMAN B C 7100
 S A V NET WORTH 4200
GF ULTIMATE NET WORTH 1U
 HFI BLACKBIRD 1K

2

EPDS	CE	BW	WW	YW	MILK
	-1.0	3.9	45	73	18



Dam



Son

Proven, predictable and powerful pedigree here! When you stack industry legends on top of each other generation after generation you get a consistent breeding machine, just look at what this one has produced. Look at her dam selling as Lot 2 and her son will be a featured Lucknow son that sells in the spring of 2022. **AI Bred to 5T Powerchip 4790 on April 7, 2021. Due to calve on January 14, 2022** Consigned by Gilchrist Farms.



GF BLACKBIRD 304D

▼ Female ▼ 1908945 ▼ GFA 304D ▼ Jan. 3/16

RA LINCOLN W144

S TITLES 1145

S CORA 572

LEACHMAN SAUGAHATCHEE 3000C

GF BLACKBIRD 304B

GF ULTIMATE NET WORTH 1U

3

EPDS	CE	BW	WW	YW	MILK
	9.0	0.6	55	86	25



2021 Son



Daughter



2020 Son



7

Net Worth, tried tested and true, this sire makes them stout, easy fleshing with great udders and puts pounds into their progeny. Coming from the Mercedes cow family this one has raised some stout featured sons who have been attractions in our spring bull sale. Her 2021 son will be another one destined for the 2022 spring bull sale. **AI bred to 5T Powerchip 4790 on April 7, 2021. Due to calve on January 14, 2022.**
Consigned by Gilchrist Farms



GF MERCEDES 328D

▼ Female ▼ 1908953 ▼ GFA 328D ▼ Jan. 10/16

S A V 8180 TRAVELER 004
 S A V NET WORTH 4200
 S A V MAY 2410
 LEACHMAN SAUGAHATCHEE 3000C
GF MERCEDES 328Z
 HCC BLACK MERCEDES 13N



EPDS	CE	BW	WW	YW	MILK
	4.0	1.6	35	66	32



2021 Son



2019 Son

Another young Tinge female who has raised some outstanding calves in her young career as a cow. Last year through this sale we saw her heifer calf demand attention and was purchased by Walkerbrae Farms. Evening Tinge 002E has an elegant and attractive look and bred to Koupal Kozi will be a combination that is sure to perform. **AI Bred to Koupal Kozi 418 on April 28, 2021. Due to calve on February 4, 2022. Consigned by Gilchrist Farms.**



GF EVENING TINGE 002E

▼ Female ▼ 1998853 ▼ GFA 002E ▼ Jan. 5/17

SILVEIRAS STYLE 9303
 BCII MLA NEXT UP 015
 R M A MISS EDGE 208
 N BAR EMULATION EXT
 GF EVENING TINGE 17Y
 JL EVENING TINGE 8001

5

EPDS	CE	BW	WW	YW	MILK
	7.0	-0.3	19	33	29



2021 Son



2020 Daughter

Mercedes, the cow family that started this adventure for us and still continues to leave her mark nearly 20 years later. After all of this time this one may be the best one yet combining the body mass that Mercedes was known for and the femininity we strive for. This direct daughter of 13N is one that is in perfect balance. We have not had a chance to flush this female and we think she is truly a great one that needs the opportunity, so we are retaining the right to one successful flush at a future date. **AI bred to 5T Powerchip 4790 on March 27, 2021. Due to calve on January 3, 2022.**
Consigned by Gilchrist Farms

GF MERCEDES 23D

▼ Female ▼ 1954571 ▼ GFA 23D ▼ Feb. 10/16

B/C LOOKOUT 7024
BC EAGLE EYE 110-7
 B/C PURE PRIDE ERICA D 110
 B/R NEW FRONTIER 095
HCC BLACK MERCEDES 13N
 H.C.C. MERCEDES 6L

6

EPDS	CE	BW	WW	YW	MILK
	5.0	0.4	48	67	20



Dam



2020 Son



2020 Son

CHOICE LOT

▼ BW: 76 lbs. Anytime we see the Mercedes name in our pedigrees we are often reminded of the great matron the 13N female was for us in starting our Angus herd. This female is out of the best daughter of 13N and has an attractive up headed look about her. **Consigned by Gilchrist Farms**



GF MERCEDES 23J

▼ Female ▼ 2215980 ▼ GFA 23J ▼ Jan. 18/21

EXAR BLUE CHIP 1877B
5T POWER CHIP 4790
5T MISS WIX 8002



EPDS	CE	BW	WW	YW	MILK
	8.5	0.6	55	81	18

CHOICE LOT

A deep bodied, great uddered daughter of International who has raised high quality stout featured progeny year after year for us. A little spicy the day she calves but she knows what to do and how to do it, so just sit back and let her create the type of calves that the cattle industry demands. **AI bred to Ellington Top Shelf on March 28. Due to calve on January 4, 2022. Consigned by Gilchrist Farms**



GF MISS WORLD 369E

▼ Female ▼ 1988404 ▼ GFA 369E ▼ Jan. 19/17

S A V HARVESTOR 0338
 S A V INTERNATIONAL 2020
 S A V EMBLYNETTE 5483
 H S A F FINAL ANSWER 36H
 PFLC MISS WORLD 369Z
 PFLC MISS WORLD 69X



EPDS	CE	BW	WW	YW	MILK
	5.0	2.4	59	99	25



2020 Son



Progeny of Maternal Sister

CHOICE LOT

▼ BW: 87 lbs. Following true to her pedigree, this female has maternal brood matron written all over her with performance to boot.

Consigned by Gilchrist Farms



GF MISS WORLD 369J

▼ Female ▼ 2215935 ▼ GFA 369J ▼ Jan. 4/21

EXAR BLUE CHIP 1877B
5T POWER CHIP 4790
5T MISS WIX 8002

7a

EPDS	CE	BW	WW	YW	MILK
	8.5	1.6	61	97	21



CHOICE LOT

The Blackbird cow family has always lead our herd for performance and set the benchmark for the rest to follow. She is a maternal sister to Semex's GF Son in Law who has been used in 39 countries around the world producing low birth, high performance cattle with added muscle shape. **AI bred to 5T Powerchip 4790 on April 7, 2021. Due to calve on January 14, 2022. Consigned by Gilchrist Farms**



GF BLACKBIRD 4D

▼ Female ▼ 1908956 ▼ GFA 4D ▼ Jan. 14/16

BARSTOW CASH
 KR CASH FLOW
 WK LASS 1591
 S A V NET WORTH 4200
 TAMBRI BLACKBIRD 4X
 TAMBRI BLACKBIRD 2P

8

EPDS	CE	BW	WW	YW	MILK
	7.0	2.1	54	95	34



Maternal Sister



Maternal Brother



2020 Son

CHOICE LOT

▼ BW: 90 lbs. A stylish daughter by Powerchip, she combines the power and performance her dam's pedigree is known for with the look and class we have come to expect from Powerchip. **Consigned by Gilchrist Farms**



GF BLACKBIRD 40J

▼ Female ▼ 2215901 ▼ GFA40J ▼ Jan. 2/21

EXAR BLUE CHIP 1877B
5T POWER CHIP 4790
5T MISS WIX 8002

8a

EPDS	CE	BW	WW	YW	MILK
	9.5	1.5	58	95	25

CHOICE LOT

I've said it before and ill say it again, these Barbara's are one of our best kept secrets. They time and time again make the right kind of cattle that are easy to work with, have great udders, outstanding performance and an ability to maintain body condition. This female is right from the top of the cow family and carrying an exciting mating by Greenwood High Class. **AI bred to Greenwood High Class JJP 87H on May 20, 2021. Due to calve on February 26, 2022. Consigned by Gilchrist Farms**



GF BARBARA 36D

▼ Female ▼ 1934727 ▼ GFA 36D ▼ Mar. 16/16

DAMERON FIRST CLASS
 C&C MC INTOSH 2038
 RAC WINNIE 7456
 CONNEALY FINAL PRODUCT
 GF BARBARA 6A
 BAILEY ACRES BARBARA 6S



EPDS	CE	BW	WW	YW	MILK
	-1.0	3.0	46	83	13



Dam



Maternal Sister



Progeny of Cow Family

▼ BW: 94 lbs. This Young April heifer calf is as long fronted as they come. She's super sound on the move and one that we are truly excited about to see what she can accomplish in the ring. With her dam's body mass and capacity we can't help but think about what this one is going to grow into.
Consigned by Gilchrist Farms



GF BARBARA 36J

▼ Female ▼ 2219351 ▼ GFA 36J ▼ Apr. 10/21

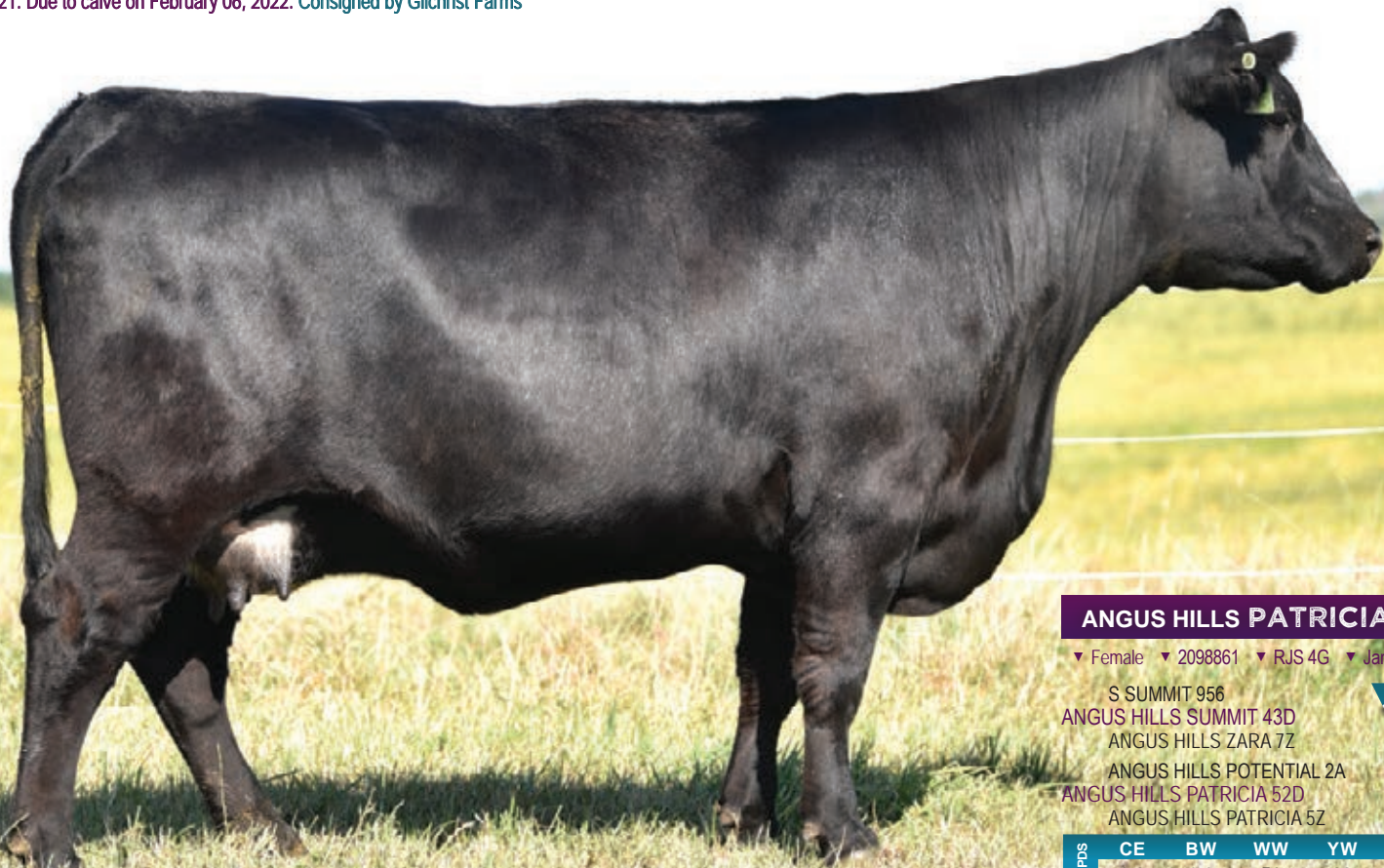
LD CAPITALIST 316
CARDINAL CASH ADVANCE 60F
CARDINAL LUCY 60D



EPDS	CE	BW	WW	YW	MILK
	3.0	2.5	61	108	18

CHOICE LOT

This young productive female has done an exceptional job raising her first calf and if that is any indication as to what she can do in the future one has to be excited. Her udder is full of milk and represented by her top 10% ranking for MILK EPD. **Bred to GF Blackstock 624G on April 30, 2021. Due to calve on February 06, 2022. Consigned by Gilchrist Farms**



ANGUS HILLS PATRICIA 4G

▼ Female ▼ 2098861 ▼ RJS 4G ▼ Jan. 17/19

S SUMMIT 956
ANGUS HILLS SUMMIT 43D
ANGUS HILLS ZARA 7Z
ANGUS HILLS POTENTIAL 2A
ANGUS HILLS PATRICIA 52D
ANGUS HILLS PATRICIA 5Z

10

EPDS	CE	BW	WW	YW	MILK
	9.0	0.2	51	88	28

▼ **BW: 60 lbs.** I've said before that this Columbus bull is the best son of discovery and here's why. This heifer calf is truly an impressive female that is deep sided, easy fleshing and has an abundance of muscle shape and thickness throughout. As this one matures into a bred look for her to sort her self to the top of the replacement pen with her structure and mass. **Consigned by Gilchrist Farms**



GF PATRICIA 37J

▼ Female ▼ 2215937 ▼ GFA 37J ▼ Jan. 7/21

V A R DISCOVERY 2240
QUAKER HILL COLUMBUS 6V48
QUAKER HILL BLACKCAP 3N23

10a

EPDS	CE	BW	WW	YW	MILK
	9.5	-0.6	63	105	28

A Powerchip two year old who has done a nice job on her first heifer calf. She is straight in her lines and easy to work with. **AI bred to Greenwood High Class JJP 87H on May 20, 2021. Due to calve on February 26, 2022. Consigned by Gilchrist Farms**



DAVE GIBSON GIBSONS GIRL 505G

▼ Female ▼ 2102921 ▼ DGA 505G ▼ Jan. 4/19

EXAR BLUE CHIP 1877B
5T POWER CHIP 4790
5T MISS WIX 8002
S A V BRILLIANCE 8077
JL MISS QUALITY 4119
JL MISS QUALITY 9133



EPDS	CE	BW	WW	YW	MILK
	8.5	0.4	53	83	18

▼ BW: 82 lbs. A very fancy correct female that has the potential to mature into an impressive looking female. We have always really liked our Final Product daughters and have continued to use this sire year after year. As they mature they get better and better and udder quality is exceptional.
Consigned by Gilchrist Farms



GF GIBSONS GIRL

▼ Female ▼ Applied For ▼ GFA 505J ▼ Jan. 3/21

CONNEALY PRODUCT 568
CONNEALY FINAL PRODUCT
EBONISTA OF CONANGA 471

11a

RE	CE	BW	WW	YW	MILK
	5.3	0.6	57	96	23

These Tinge females really are remarkable in terms of their ability to breed on. This one is out of what I consider to be our best three year old and I am really excited to see what she can produce in the next few years. A different pedigree for most but if you like perfect udder structure, growth and a look this one has all that and more. **Bred to GF Attractive 624H on June 23, 2021. Due to calve on April 1, 2022. Consigned by Gilchrist Farms**



GF EVENING TINGE 002H

▼ Female ▼ 2140983 ▼ GFA 002H ▼ Jan. 1/20

CONNEALY PRODUCT 568
 CONNEALY FINAL PRODUCT
 EBONISTA OF CONANGA 471
 KOU PAL JUNCTION 037
 GF EVENING TINGE 002F
 JL EVENING TINGE 1282

12

EPDS	CE	BW	WW	YW	MILK
	-3.0	3.5	65	113	28



Grand Dam



Full Sister to GrandDam



Full Sister to GrandDam

GF Evening tinge 315H has an impressively stacked pedigree. Going back to 81A the dam of Lot 1B she also combines the 2014 RAWF Champion Angus bull Northern Light. Her grand dam, great grand dam and great, great grandam were all div champions at the RAWF in Toronto. Talk about a royally bred female, this one has as many div winners in her pedigree as any in the sale. **Bred to Cardinal Cash Advance 60F on May 19, 2021. Due to calve on February 25, 2022. Consigned by Gilchrist Farms.**



GF EVENING TINGE 315H

▼ Female ▼ 2140986 ▼ GFA315H ▼ Jan. 2/20

CONNEALY PRODUCT 568
 CONNEALY FINAL PRODUCT
 EBONISTA OF CONANGA 471
 S A V SENSATION 5615
 GF EVENING TINGE 315F
 GF EVENING TINGE 81C

13

EPDS	CE	BW	WW	YW	MILK
	5.0	0.5	50	92	24



Great Grand Dam



Maternal Grand Sire

Ultra fancy female from the Evening Tinge Family. Her dam is the jaw dropping Gf Evening Tinge 17Y donor and if her maternal genetics come through this one will have a bolted on balanced impeccable udder when she calves. If there would have been shows this year, we would have been awfully excited to see what this one could do inside the ring! **Bred to Cardinal Cash Advance 60F on April 20, 2021. Due to calve on January 27, 2022. Consigned by Gilchrist Farms and Grazie Hill Farm**



GF EVENING TINGE 12H

▼ Female ▼ Applied For ▼ GFA 12H ▼ Feb. 15/20

DAMERON FIRST CLASS
 COLBURN PRIMO 5153
 SILVEIRAS SARAS DREAM 1339
 N BAR EMULATION EXT
 GF EVENING TINGE 17Y
 JL EVENING TINGE 8001

14

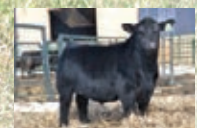
PE	CE	BW	WW	YW	MILK
	2.0	2.8	46	76	21



Dam



Maternal Sister



Full Brother to Dam



Progeny of Maternal Sister

Coming from the Crush Maid cow family this one has growth and style in a structurally sound package. Her dam was a high performance female and had passed down those same traits to her. She ranks in the top 5% of the breed for WW and top 10% for YW. Selling safe to Cash Advance, the progeny will have an impressive data set. **Bred to Cardinal Cash Advance 60F on May 9, 2021. Due to calve on February 15, 2022. Consigned by Gilchrist Farms.**



GF CRUSHMAID 599H

▼ Female ▼ 2215858 ▼ GFA 599H ▼ Apr. 9/20

MOHNEN DENSITY 730
 MOHNEN SOUTH DAKOTA 402
 MOHNEN JILT 539
 C&C MC INTOSH 2038
 GF CRUSH MAID 100B
 ELMGROVE CRUSH MAID 11P

15

EPDS	CE	BW	WW	YW	MILK
	2.0	3.0	63	102	23



Dam and Maternal Sister



Progeny of Maternal Sister

A moderate female with a ton of potential. Sired by Columbus, who to this day is the best son of Discovery available on the market and out of the Barbara 6A cow who has yet to disappoint us. She has been 50K tested and has a nice spread from BW to YW and carcass traits that will help move a herd forward. **Bred to GF Attractive 624H on June 12, 2021. Due to calve on March 21, 2022. Consigned by Gilchrist Farms**



GF BARBARA 68H

▼ Female ▼ 2215860 ▼ GFA68H ▼ May. 9/20

V A R DISCOVERY 2240

QUAKER HILL COLUMBUS 6V48

QUAKER HILL BLACKCAP 3N23

CONNELLY FINAL PRODUCT

GF BARBARA 6A

BAILEY ACRES BARBARA 6S

16

EPDS	CE	BW	WW	YW	MILK
	3.0	0.6	60	106	24



Dam



Maternal Sister



Maternal Sister

An elegantly constructed Powerchip daughter from the popular JL Lady family. Her dam was a powerfully constructed, big bodied brood cow and with this one carrying a Cash Advance pregnancy, the resulting offspring should be a balance of power and eye appeal. **Bred to Cardinal Cash Advance 60F on April 26, 2021. Due to calve on February 2, 2022. Consigned by Gilchrist Farms.**



GF LADY 146H

▼ Female ▼ 2141002 ▼ GFA 146H ▼ Feb. 1/20

EXAR BLUE CHIP 1877B
 5T POWER CHIP 4790
 5T MISS WIX 8002
 S A V ELIMINATOR 9105
JL LADY 4146
 JL LADY 8026



EPDS	CE	BW	WW	YW	MILK
	8.0	1.2	50	85	20



Dam

▼ BW: 82 lbs. Here is a heifer that has captured the attention of many. If you like cattle that have extra look and finesse, Georgina is one to look up. Take a look at the sire stack in her pedigree; Style, Lookout, First Impression and Saugahatchee. It's no wonder she has that wow factor. For those that like to dig into pedigrees, you will notice her Great Granddam is also the same as the Great Granddam in Premier Fusions pedigree, LLA Georgina 005 who is also a maternal sister to the all time high income producing cow at the famed Champion Hill LLA Georgina 419. Here's one that will make a fun junior project, and then be a cornerstone female in any herd. **Consigned by Premier Livestock**



PREMIER GEORGINA 102J

▼ Female ▼ 2213092 ▼ PLS 102J ▼ Jan. 4/21

SILVEIRAS STYLE 9303
 SILVEIRAS S SIS GQ 2353
 K N C CABIN CREEK SANDY 804
 DAMERON FIRST IMPRESSION
 VOYAGER GEORGINA 416
 Q V S GEORGINA T412

18

EPDS	CE	BW	WW	YW	MILK
	2.0	3.0	46	78	20

This bred heifer is one that hails from our most potent cow families. Empress 021 is beautiful in her structure, deep bodied and sound. These Empress females have proven to be very productive for their owners. Her dam is a stunning daughter of Style and her famous Granddam OSU Empress 3100 was Champion Angus Female and Supreme Champion Female at the 2014 and 2015 Toronto Royal Winter Fairs. She is the only female in history to be named Supreme All Breed Champion. On the top side of the pedigree you find the 2018 and 2019 Grand Champion bull from Toronto Royal Winter Fair, Mich Wheatland Hi Caliber, a bull who has consistently added performance to his calf crop by adding length and depth to his progeny. Empress 021 is a female that can play a major role in your program, whether you are wanting to raise calves that push down the scales or are looking for that extra degree of style. The mating to Premier Fusion will combine the two greatest cow families to ever walk our pastures.

AI bred to Premier Fusion 809F on March 25, 2021. Due to calve on January 1, 2022. Consigned by Premier Livestock and Hasson Livestock



PREMIER EMPRESS 021H

▼ Female ▼ 2151596 ▼ PLS 21H ▼ Mar. 1/20

EXAR CLASSEN 1422B
MICH WHEATLAND HICALIBER 7197E
EXAR HIGHROSE 84026
SILVEIRAS STYLE 9303
PREMIER HASSON EMPRESS 609
OSU EMPRESS 3100

19

EPDS	CE	BW	WW	YW	MILK
	4.0	2.3	65	105	23

This is one that I have been fond of from the time she was a baby. A Hicaliber daughter that has an extra shot of muscle and stoutness, while still looking like a brood cow. A descendant of the Bardetta cow family, her young dam is a Slider daughter we acquired at the Royal from the good folks at Fallis Land and Cattle. Her Granddam is an Insight daughter that was successfully campaigned by Cole Fallis and has gone on to be a foundation female in their herd. She is bred to OHL Gunner, a bull we admire for his look and data set. **AI bred to OHL Gunner 7263G on May 8, 2021. Due to calve February 12, 2022. Consigned by Premier Livestock**



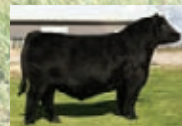
PREMIER BARDETTA 26H

▼ Female ▼ 2151597 ▼ PLS 26H ▼ Mar. 12/20

EXAR CLASSEN 1422B
 MICH WHEATLAND HICALIBER 7197E
 EXAR HIGHROSE 84026
 WWSC SLIDER
 FLC BARDETTA 613F
 PREMIER HASSON BARDETTA 613



EPDS	CE	BW	WW	YW	MILK
	7.0	0.9	50	84	27



Service Sire

Here's a heifer with a tried and predictable pedigree. The combination of PVF Insight and the Bardetta cow family is a no miss. A full sister in blood to this female is the cornerstone female of the Fallis Land and Cattle herd, another full sister in blood is raising one of our best OHL Gunner bull calves this year as a two year old. Insight daughters have proven themselves for years to be productive, good uddered cows that have the ability to produce the good kind! Don't let an opportunity to acquire a Barretta daughter pass you by! This one is bred to OHL Gunner, a bull with incredible look and a data set that puts him at the top of charts for many production traits along with being in the Top 1 percentile for claw and foot angle!! **AI bred to OHL Gunner 7263G on April 5, 2021. Due to calve on January 17, 2022. Consigned by Premier Livestock and Hasson Livestock**



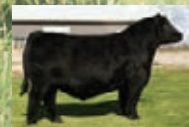
PREMIER HASSON BARDETTA 024H

▼ Female ▼ Applied For ▼ PLS 24H ▼ Mar. 2/20

S A V BRILLIANCE 8077
 PVF INSIGHT 0129
 PVF MISSIE 790
 S A V FIRST CLASS 0207
PFLC BARDETTA 4E
 LEGEND LANE BARDETTA 824U

21

PE	CE	BW	WW	YW	MILK
	4.0	2.8	52	91	26



Service Sire



Dam

Tambri Lucia 3G is a daughter of SAV International out of an exceptional Network dam. We purchased Lucia 209A from the Gilchrist sale as a heifer calf. 209A has given us tremendous bulls and this one heifer and that is why we are selling choice on these two females. 3G is deep long bodied female with a good udder and sound feet. She is halter broke and very quiet. **AI bred to Musgrave 316 Colossal on April 11, 2021, known for his body mass and rib shape and great feet. Exposed to Tambri Hero 15H from April 30 to July 1, 2021. Hero is a solid S A V Best Interest son out of a BAR-E-L dam. Examined safe favourable to AI. Consigned by Tambri Farm.**



TAMBRI LUCIA 3G

▼ Female ▼ 2114064 ▼ TMJ 3G ▼ Jan. 4/19

S A V HARVESTOR 0338
 S A V INTERNATIONAL 2020
 S A V EMBLYNETTE 5483
 S A V NET WORTH 4200
 GF LUCIA 209A
 5-STAR LUCIA 511U

22

EPDS	CE	BW	WW	YW	MILK
-1.0	4.6	65	109	26	

CHOICE LOT

▼ BW: 62 lbs. Tambri Lucia 1J is a powerhouse! I can't say enough about the Baldrige Command calves. He is a son of EF Command and a Hoover Dam momma. They come out small, but they blossom into deep thick bodied females. They are very docile as well. She is halter broke. Sells open
Consigned by Tambri Farm.



TAMBRI LUCIA 1J

▼ Female ▼ 2206693 ▼ TMJ 1J ▼ Jan. 4/21

EF COMMANDO 1366
BALDRIDGE COMMAND C036
BALDRIDGE BLACKBIRD A030
S A V INTERNATIONAL 2020
TAMBRI LUCIA 3G
GF LUCIA 209A



EPDS	CE	BW	WW	YW	MILK
	6.0	1.6	64	112	27

CHOICE LOT

Tambri Zara 2G is a beautiful SAV Renown daughter. She has developed into a great cow with a good balanced udder. SAV Renown is one of the great bulls of this time. He makes his females stout, wide based and super footed. We bought her dam from the Kemp herd as a heifer calf. Zara 13D is a South Dakota daughter and has become one of our best cows. She is halter broke. **AI bred to Musgrave 316 Colossal on April 11, 2021, known for his body mass and rib shape. Exposed to Tambri Hero 15H from April 30 to July 1, 2021. He is a solid SAV Best Interest son out of a BAR -E-L dam. Examined safe, favourable to AI. Consigned by Tambri Farm.**



TAMBRI ZARA 2G

▼ Female ▼ 2114067 ▼ TMJ 2G ▼ Jan. 3/19

RITO 707 OF IDEAL 3407 7075
 S A V RENOWN 3439
 S A V BLACKCAP MAY 4136
 MOHNEN SOUTH DAKOTA 402
 KEMP BROTHERS ZARA 13D
 KEMP BRO'S MS ZARA 47Z

23

EPDS	CE	BW	WW	YW	MILK
	1.0	3.2	73	123	25

▼ BW: 68 lbs. Tambri Zara 13J is a sweet, soft made heifer with loads of capacity and thickness. These Baldrige Command calves are exceptional in my mind. He is a son of EF Command and a Hoover Dam momma. They come out low birth weight, but they develop into thick deep cattle. This heifer comes from a long line of great dams, and she won't disappoint. She is halter broke and sells open. **Consigned by Tambri Farm.**



TAMBRI ZARA 13J

▼ Female ▼ 2206692 ▼ TMJ 13J ▼ Jan. 1921

EF COMMANDQ 1366
BALDRIDGE COMMAND C036
BALDRIDGE BLACKBIRD A030



EPDS	CE	BW	WW	YW	MILK
	5.0	1.8	70	122	27

▼ BW: 66 lbs. Tambri Phyllis 4J comes with loads of style! She is a big volume heifer and correct made. She also has a pedigree loaded with great ones. Her dam is an SAV President daughter and her grand dam is Champion Hill Phyllis. Her sire, GF Lucknow 905G was the high seller in the Gilchrist sale in 2019. He is a son of Musgrave. Lucknow is a thick made, powerful bull and is producing calves with muscle shape, depth of body and great growth. Sells open. **Consigned by Tambri Farm.**



TAMBRI PHYLLIS 4J

▼ Female ▼ 2206691 ▼ TMJ 4J ▼ Jan. 5/21

MUSGRAVE 316 STUNNER
GF LUCKNOW 905G
GF JENA 905E
S A V PRESIDENT 6847
LEELA PHYLLIS 2G
LOCUST GROVE PHYLLIS 2E

24

EPDS	CE	BW	WW	YW	MILK
	5.0	1.7	71	114	24

This JMB Traction granddaughter is one that we feel has a load of future ahead of her. She combines a nice balance of rib, structure, eye appeal and out of a productive cow we purchased from Youngdale. Her maternal sister is out doing herself on her first calf, raising one of the top heifers. If you want to add a female that is functional and will thrive in a low maintenance environment 64H fits the bill. **AI bred to Cardinal Cash Advance on April 8, 2021. Consigned by Harprey Farms.**



HARPREY BLACKBIRD 64H

▼ Female ▼ 2142934 ▼ PSH 64H ▼ Mar. 13/20

JMB TRACTION 292
HARPREY TRACTION 9F
HARPREY BIRDIE 28W
YOUNG DALE XCALIBER 32X
YOUNG DALE BLACKBIRD 23Z
YOUNG DALE BLACKBIRD 107N

25

EPDS	CE	BW	WW	YW	MILK
	-3.0	4.2	64	103	16

Don't let the prefix on this one fool you, she is the Walkerbrae kind all the way! 636G is out of the heart of our 2 year old pen and man we haven't had a group of 2 year olds of their calibre ever! 636G is an Emblynette straight from the iconic North Perth herd, sired by a really correct Youngdale Nozeka son who has done wonders for us! **AI bred to Duff-JC 4Real 16250 on March 24, 2021, a Napoleon 232 son. Pasture exposed to Walkerbrae Mind Game 608G from April 28 to August 19, 2021. Consigned by Walkerbrae Farms**



CITY LIGHTS EMBLYNETTE 636G

▼ Female ▼ 2088475 ▼ CTAJ 636G ▼ Jan. 29/19

YOUNG DALE NOZEKA 2Z
 WALKERBRAE ILEGAL ADDICTION 5D
 BUSCHBECK ROSE 8306Z
 CONNEALY FINAL PRODUCT
 NORTH PERTH EMBLYNETTE 703
 NORTH PERTH EMBLYNETTE 518

26

EPDS	CE	BW	WW	YW	MILK
	1.0	2.1	47	90	27



Sire

▼ BW: 63 lbs. The proof is in the pudding with this calf! She is proof that her mamma is a high calibre production female and that great cow families are worth their weight in gold. 804J is sired by a two year old Charlo 0256 son out of a Soo Line Motive sired cow from Soo Line's Pride cow family. This calf is efficient, stylish and is very desirable in her make up, all carried on an impeccable set of feet and legs. **Consigned by Walkerbrae Farms**



CITY LIGHTS EMBLYNETTE 804J

▼ Female ▼ 2221315 ▼ CTAJ 804J ▼ Jan. 3/21

COLEMAN CHARLO 0256
WALKERBRAE MIND GAME 608G
WALKERBRAE PRIDE 127A



EPDS	CE	BW	WW	YW	MILK
	4.5	1.1	48	88	26



Sire

Musgrave 316 Stunner hit the Angus world by storm leaving wedge shaped, easy fleshing females with perfect udders and temperaments. Ellsmere Lady 0124H follows those same footsteps. She's easy fleshing, wide topped, square hipped, and with a great front third. Ellsmere Lady 0124H is literally a carbon copy to her dam PFLC Lady 124F who has a picture-perfect udder and just keeps getting better and better as she matures. Ellsmere Lady 0124H is bred to our current walking bull PFLC Insight 908F, a highlight bull from the Mid-Western Angus Bull Sale. Insight 908F is big topped, big butted, big footed, long sided and sired by the legendary PVF Insight 0129, and mothered by the highly maternal PFLC Forever Lady 8Z, who resides here also at Ellsmere Farms and is still going strong. So if you're looking for a female stacked top to bottom with female power Ellsmere Lady 0124H is a great fit for anyone's program. **Bred to PFLC Insight 908F on April 20, 2021. Pasture exposed to Ellsmere Jazz 0810H from May 1 to July 15, 2021. Preg checked safe to PFLC Insight for a third week of January calf. Consigned by Ellsmere Farms Ltd.**



ELLSMERE LADY 0124H

▼ Female ▼ 2164990 ▼ ELLS 0124H ▼ Jan. 1/20

LD CAPITALIST 316
 MUSGRAVE 316 STUNNER
 MCATL BLACKBIRD 831-1378
 S AV BRILLIANCE 8077
 PFLC LADY 124F
 JUSTAMERE 620S CARLA 456U

27

EPDS	CE	BW	WW	YW	MILK
	4.0	2.1	55	99	23



Dam



Sire

▼ BW: 70 lbs. One of the first PVF Blacklist 7077 heifers in Canada. This heifer is stout yet feminine and has the look to be a top competitor. Her dam was bred by PVF and comes from the renown Proven Queen family and sired by C&C McKinley 3000 EXAR. One of the few McKinley's in Canada. 801 received the Reserve Senior Yearling Female Banner at the 2019 Royal National Angus Show. Queen's List 117 definitely has all the credentials! **Consigned by Koyle Farms.**



KOYLE QUEEN'S LIST 117

▼ Female ▼ 2216771 ▼ MDKP 17J ▼ Feb. 6/21
 PVF INSIGHT 0129
 PVF BLACKLIST 7077
 PVF BLACKBIRD 3070
 C&C MCKINLEY 3000 EXAR
ANDERSON'S PROVEN QUEEN 801
 PVF PROVEN QUEEN 2108

28

EPDS	CE	BW	WW	YW	MILK
	3.0	3.6	62	101	14



Dam



Sire

Enchantress Charmer 93H is a powerful bred heifer from the top of the Lynden Manor replacement females and was produced by the Lynden Manor selection as the top-selling first calf heifer of the 2020 LLB Sale, Enchantress Charmer 79F and is sired by the featured LLB herd sire, Product 19F. The dam of Enchantress Charmer 93F is a direct daughter of the proven and productive foundation LLB female, Enchantress Charmer 2X sired by the longtime headliner of the LLB, Prime Time Cattle and Diamond T Cattle Company herd sire rosters, Blue Chip 4230. Enchantress Charmer 93H stems from one of the top producing families in the LLB program and descends from the foundation Senorita family made famous in the Bipperts Angus and Krueger Family programs. **AI bred to EXAR Guru 8719B on May 14, 2021. Due to calve on February 12, 2022. Consigned by Lynden Manor Farm.**



© Buschbeck

LLB ENCHANTRESS CHARMER 93H

▼ Female ▼ 2144637 ▼ LLB 93H ▼ Feb. 3/20

GF AMC 6C

LLB 6C PRODUCT 19F

T LAZY H BEULAH 19W

OSU BLUE CHIP 4230

LLB ENCHANTRESS CHARMER 79F

LLB ENCHANTRESS CHARMER 2X

29

EPDS	CE	BW	WW	YW	MILK
	-2.0	4.1	42	74	19

▼ **BW: 50 lbs.** We couldn't be more proud of this calf. Our first Angus consignment to date and we feel it's an exceptional one! We bought this calf's mother in the Johnson Livestock dispersal and she was kind enough to lay down and give us twin heifers, so we've decided to offer this Deer Valley Growth Fund daughter for your consideration. Out of easily the most productive cow we've ever owned, and just as complete and well made as you'll find one. Successfully shown as a 4-H project by a first year member, this calf will make a fantastic project for any level of showman. Take two, maybe three looks at this one. We like her that much! **Consigned by Taylor Makey**



MAPLEM JUNEBUG 3J

▼ Female ▼ 2199826 ▼ TLM 3J ▼ Feb. 4/21

BASIN PAYWEIGHT 1682
DEER VALLEY GROWTH FUND
DEER VALLEY RITA 36113

PVF INSIGHT 0129
JL MAYFLOWER 6029
JL MAYFLOWER 446B

30

RE	CE	BW	WW	YW	MILK
4.5	2.2	69	125	28	

OCC Legacy 839L daughters are hard to come by and 007H is a perfect example of why. She is moderate framed, deep bodied, easy fleshing and structurally correct, with a near perfect teat set. Our Lady Ann cow family, originating from MVF Lady Ann 354W, consistently produces outstanding females who take care of themselves and their calves. 007H's mating to NWSS and CWA reigning champion, Conley South Point 8362, should make for a very exciting mating come January 2022. **AI bred to Conley South Point 8362 on April 4, 2021. Preg checked safe to this service. Consigned by SCOMAC Livestock.**



SCOMAC LADY ANN 007H

▼ Female ▼ 2169728 ▼ ESM 007H ▼ Jan. 28/20

O C C ECHELON 857E
 O C C LEGACY 839L
 O C C DIXIE ERICA 960E
 MAR INNOVATION 251
 SCOMAC LADY ANN 322D
 SCOMAC LADY ANN 316A

31

EPDS	CE	BW	WW	YW	MILK
	5.0	1.4	40	71	24



Dam



Sire



Service Sire

▼ **BW: 87 lbs.** Our Bess cow family is feminine and maternal and 106J is no exception. She is an eye-catching, correct female with a long spine, big hip and clean front. This Resource calf would make an excellent show prospect and will go on to make a beautiful and productive cow in any herd. **Consigned by SCOMAC Livestock.**



SCOMAC BESS 106J

▼ Female ▼ 2191806 ▼ ESM 106J ▼ Jan. 6/21

RITO 707 OF IDEAL 3407 7075
S A V RESOURCE 1441
S A V BLACKCAP MAY 4136
BELLSTAR STANLEY CUP 1Z
SCOMAC BESS 302C
SCOMAC BESS 111Z

32

EPDS	CE	BW	WW	YW	MILK
	2.0	4.4	61	113	20



Dam



Sire

▼ **BW: 70 lbs.** The Blackbird cow family does two things extremely well for us: calve easy and pack pounds on their calves. 103J ranks in the top end of the breed for calving ease and birth weight and she displays exceptional performance. She is deep, stout, powerful, big footed and strong boned. **Consigned by SCOMAC Livestock.**



SCOMAC BLACKBIRD 103J

▼ Female ▼ 2191805 ▼ ESM 103J ▼ Jan. 1/21

LD CAPITALIST 316
 MUSGRAVE 316 COLOSSAL 137
 MUSGRAVE LADY BARBARA 545
 BELLSTAR STANLEY CUP 1Z
 SCOMAC BLACKBIRD 102C
 LOCUST GROVE BLACKBIRD 11W

33

EPDS	CE	BW	WW	YW	MILK
	14.0	-1.0	55	96	24



Sire

AI bred to SAV Bloodline 9578 on March 24, 2021. Consigned by Leela Farms



LEELA EVENING TINGE 10G

▼ Female ▼ 2083229 ▼ LELA 10G ▼ Feb. 2/19

EXG RS FIRST RATE S903 R3
DAMERON C-5 AMERICAN CLASSIC
DAMERON NORTHERN MISS 3114
MOHNEN SOUTH DAKOTA 402
REHORST EVENING TINGE DAK 620D
JL EVENING TINGE 2280

34

EPDS	CE	BW	WW	YW	MILK
	3.0	2.5	50	91	24

47

AI bred to S A V Renown 3439 on April 7, 2021. Consigned by Leela Farms



LOCUST GROVE PHYLLIS 2E

▼ Female ▼ 1959012 ▼ WTM 2E ▼ Jan. 2/17

S A V FINAL ANSWER 0035
S A V CAMARO 9272
S A V DUKE GIRL 7348
S A V 8180 TRAVELER 004
CHAMPION HILL PHYLLIS 5402
CHAMPION HILL PHYLLIS 3895

35

EPDS	CE	BW	WW	YW	MILK
	8.0	0.7	49	77	21

AI bred to SAV Renown 3439 on April 7, 2021. Consigned by Leela Farms



LOCUST GROVE MAYFLOWER 15E

▼ Female ▼ 1959019 ▼ WTM 15E ▼ Jan. 18/17

SITZ TRAVELER 8180
S A V FINAL ANSWER 0035
S A V EMULOUS 8145
S A V ANGUS VALLEY 1867
JL MAYFLOWER 5176
JL MAYFLOWER 2406

36

EPDS	CE	BW	WW	YW	MILK
	6.0	1.5	46	87	20

30D is a big volume Believe daughter we bought from Harprey Farms. Standing on an impressive set of feet, 30D has weaned the heaviest heifer calf for us this year, 710 lbs on July 25th. If you believe the cow should outbreed herself look at her Varilek Geddes 7068 heifer calf. We are extremely proud of this calf. The calf is big ribbed, deep, moves like a cat and as quiet as they come. The calf has been used as a 4-H project this year so is no stranger to a halter or being worked with. The cow is bred back to Geddes on April 23rd for a late January baby. **Bred to Varilek Geddes 7068 on April 23, 2021. Confirmed safe to AI date. Consigned by Deacan Ridge Farms Inc.**



HARPREY ELINE ERICA 30D

Female | 1921473 | PSH 30D | Feb. 6/16

- YOUNG DALE XCALIBER 32X
- YOUNG DALE BELIEVE 46B
- YOUNG DALE GRACE 126Z
- HARPREY DAYTONA 8P
- HARPREY ELINE ERICA 61T
- HARPREY ELINE ERICA 3G

37

EPDS	CE	BW	WW	YW	MILK
	-10.0	6.0	64	107	20

▼ BW: 83 lbs. ▼ WW: 710 lbs. Consigned by Deacan Ridge Farms Inc.



CANDEA ERICA 1012J

▼ Female ▼ 2221760 ▼ CDRC 12J ▼ Jan. 1/21

KM BROKEN BOW 002
VARILEK GEDDES 7068
VARILEK GOLDIE 5051 506

37a

EPDS	CE	BW	WW	YW	MILK
	0.5	2.9	69	114	24

Idellette 24H is a moderate framed, very smooth, stylish heifer, super fronted and very uniform throughout. Sired by SCC Bando 17D the 2017 Royal Winter Fair Junior Champion Bull who is leaving a very consistent group of heifers here at Tullamore. Her dam is sired by the mighty S A V Density. What a female maker he was! Idellette 24H will go on to be a very productive cow as is her dam. **AI bred to Baldridge Movin On on May 11, 2021. He is a moderate framed, calving ease prospect. Pasture exposed to our junior herdsire Justamere Full Pride 938H from June 4 to September 1, 2021. Preg checked safe to AI, due to calve in mid-February. Consigned by Tullamore Angus.**



TULLAMORE IDELETTE 24H

▼ Female ▼ 2194812 ▼ GWJ 24H ▼ Jan. 28/20

SCC BANDO 51A
 SCC BANDO 17D
 SCC TIBBIE 92X

S A V 004 DENSITY 4336
 SOUTHVIEW IDELETTE 11X
 HAPPYVALE IDELETTE 6N

38

EPDS	CE	BW	WW	YW	MILK
-	-	-	-	-	-

© Buschbeck

Tullamore Countess 33H is a younger February heifer, massive in her structure but very sound on her feet and legs, carrying width over her top and depth down through her lower half. Again sired by SCC Bando 17D the 2017 Royal Winter Fair Junior Champion Bull and the 2018 Royal Winter Fair Reserve Senior Champion Bull. Her dam by Net Worth is a very prolific hard working cow passing on her style and substance to her offspring. **AI bred to Baldrige Movin On on May 11, 2021. He is a bull descending from the two most prominent cows in the Baldrige program, Y69 and A030. He is a calving ease bull with perks for fertility, maternal traits and growth. Pasture exposed to Justamere Full Pride 948H from June 4 to September 1, 2021. He is a bull that combines Cowboy Up and South Dakota in his pedigree. Preg checked safe in calf, due mid-April to Justamere Pride. Consigned by Tullamore Angus.**



© Buschbeck

TULLAMORE COUNTESS 33H

▼ Female ▼ 2194860 ▼ GWJ 33H ▼ Feb. 19/20

SCC BANDO 51A
 SCC BANDO 17D
 SCC TIBBIE 92X
 S A V .NET WORTH 4200
 HARPREY COUNTESS 38U
 FIRST LINE COUNTESS 3R



PE	CE	BW	WW	YW	MILK
1.0	3.4	52	88	23	

Here is a beauty that is hard to part with. Lucy 2H is a deep sided, feminine female with a good set of feet and legs. Her dam is a cow we bought at this sale in 2019 with her great grandmother being the famous Royal Lucy DRCC 4111P cow, and her sire GF Verdict is known for calving ease with a great set of EPD's and out of the Evening Tinge 17B female. Lucy is going to be a cow that will stand out in your herd and will produce for a long time. If you are looking for cattle that are docile, halter broke and look balanced with mass, this one is high on the list. **AI bred to Cardinal Cash Advance 60F on May 1, 2021. Preg checked safe. Consigned by Breezy Knoll Livestock.**



BREEZY KNOLL WHERE IS LUCY 2H

▼ Female ▼ 2138745 ▼ JBK 2H ▼ Feb. 8/20

S TITLEST 1145
GF VERDICT 71D
GF EVENING TINGE 17B
PM FLIGHT RISK 91'15
DOUBLE L POPLAR LUCY
GF LUCY 513D

40

EPDS	CE	BW	WW	YW	MILK
-	-	-	-	-	-

▼ **BW: 66 lbs.** If you are looking for a cow line that can produce top notch females look no further. DSMR Queen 208J is a moderate framed female, who is deep ribbed and balanced in her profile. 208J is very angular in her makeup, with a great disposition. Her dam is a direct daughter of Hawthorn Queen 1R who has produced countless show champions. To top this heifers stacked pedigree is her sire 5T Power Chip 4790. He has added extra mass and style to his calves, with this heifer being no exception! **Consigned by DSMR Stock Farm.**



DSMR QUEEN 208J

▼ Female ▼ 2222643 ▼ DSMR 208J ▼ Feb. 8/21

EXAR BLUE CHIP 1877B
5T POWER CHIP 4790
5T MISS WIX 8002
SILVEIRAS S SIS GQ 2353
GF QUEEN 807F
HAWTHORNE QUEEN 1R

41

EPDS	CE	BW	WW	YW	MILK
	7.0	1.5	51	75	14

A really attractive, excellent uddered daughter of the popular and hard to find Silveiras Style. She has been an excellent producer raising two featured bulls in the Midwestern Ontario Bull Sale, as well as outstanding daughters. This female was shown successfully last year as a pair coming home with Reserve Grand Champion, and with her youthfulness we think she can do even better next time out. **Bred to Cardinal Cash Advance 60F on April 1, 2021. Due to calve on January 8, 2022. Consigned by Otter Creek Farms.**



FRANCISCO PURE PRIDE 5A

▼ Female ▼ 1720284 ▼ MJLS 5A ▼ Jan. 9/13

GAMBLES HOT ROD
 SILVEIRAS STYLE 9303
 SILVEIRAS ELBA 2520
 FGAF RIBEYE 401P
 FRANCISCO'S PURE PRIDE 1W
 UPPER GLEN ANNE 3T

42

CE	BW	WW	YW	MILK
3.0	1.0	41	73	30



Daughter



Son



Son

▼ BW: 90 lbs. A long spined, attractive made daughter of Pure Pride. Her maternal sister was a standout last year in this sale selling to Rail Line Farms, and with this ones feminine attributes and impressive data set she will also mature into a highly productive female.
Consigned by Otter Creek Farms.



GF PURE PRIDE 5J

▼ Female ▼ 2218174 ▼ GFA5J ▼ Feb. 22/21

LD CAPITAL LIST 316
CARDINAL CASH ADVANCE 60F
CARDINAL LUCY 60D

42a

EPDS	CE	BW	WW	YW	MILK
	5.0	1.5	59	103	26



ANDREW PURE PRIDE 236F

▼ Female ▼ 2043664 ▼ EWA 236F ▼ Jan. 10/18

S A V REGISTRY 2831
 S A V SENSATION 5615
 S A V BLACKCAP MAY 4136
 FGAF RIBEYE 401P
 FRANCISCO'S PURE PRIDE 1W
 UPPER GLEN ANNE 3T

43

Andrew Pure Pride 236F is a natural daughter from our donor cow Francisco's Pure Pride 1W, who has been a fantastic cow here, I expect the same results from her Sensation daughter and her Elevation grand daughter presented here at Gilchrist's. **AI bred to High Point Cache 894 on April 4, 2021. Pasture exposed to JL Resource 0225 from April 20 to June 1, 2021. Breeding favours AI date. Consigned by Andrew Angus.**



Dam

EPDS	CE	BW	WW	YW	MILK
	1.0	1.1	45	85	22

ANDREW PURE PRIDE 27J

▼ Female ▼ 2224511 ▼ EWA 27J ▼ Jan. 2/21

BALDRIDGE COLONEL C251
 MONTANA ELEVATION 7108
 MONTANA BLACKCAP C038

43a

▼ BW: 71 lbs. Consigned by Andrew Angus.

EPDS	CE	BW	WW	YW	MILK
	5.5	1.1	62	114	29

▼ BW: 80 lbs. Extremely powerful female here! This girl hasn't looked back since the day she hit the ground. She comes from a cow family that never lets us down and her dam is no exception. If you're looking for a herd bull maker with udder quality built in, here she is. **Consigned by Iris Creek Farms.**



ICF BETH 358C 102J

▼ Female ▼ PC03081810 ▼ ICF 102J ▼ Jan. 2/21

TH 89T 755T STOCKMAN 475Z
 TH 403A 475Z PIONEER 358C ET
 TH 71U 17Y RITA 403A

44

NJW 73S M326 TRUST 100W ET
 ICF TANSY 100W 204B
 ICF TANSY 152M 210W

EPDS	CE	BW	WW	YW	MILK
	3.9	3.6	69.3	114.4	22.5



Dam



▼ BW: 82 lbs. Dark red and kid broke; here's a major Bonanza 2022 candidate. That's just the appetizer though, take a look at her mother and just imagine the front pasture female this one will develop into someday. Tahoe has worked on all of our cows. With daughters now in production, we expect the same functional and good uddered female with this lady. **Consigned by Iris Creek Farms.**



ICF WILMA 23B 124J

▼ Female ▼ PC03081806 ▼ ICF 124J ▼ Jan. 24/21

SHF TAHOE R117 T100
 ANL C HAR T100 TAHOE 86 ET 23B
 ANL 7N MAPLE 86R
 NJW 73S M326 TRUST 100W ET
 ICF WILMA 100W 107F
 ICF WILMA 303T 101A

45

EPDS	CE	BW	WW	YW	MILK
	-1.9	5.0	63.9	105.3	26.8



Dam

▼ **BW: 83 lbs.** Dark red and goggle eyed, this female is what every Hereford breeder wants. Udder quality and maternal strength run deep in this cow family. Her full sister is one of our best bred heifers, thus the opportunity to sell 104J. Show broke and ready to head to Lindsay next summer. **Consigned by Iris Creek Farms.**



ICF WILMA 27A 104J MDF

▼ Female ▼ PC03082151 ▼ ICF 104J ▼ Jan. 4/21

NW 73S W18 HOMETOWN 10Y ET
 NJW 135U 10Y HOMETOWN 27A
 NW 4037 34S DURANGO VACA 135U

46

ICF APEX 44Y 213A
 ICF WILMA 213A 228C
 ICF WILMA 303T 301A

EPDS	CE	BW	WW	YW	MILK
	3.1	2.4	55.2	89.3	25.0

▼ **BW: 88 lbs.** Where do we start here? 203J has been a standout since day one. Off of the 2018 Royal Winter Fair Champion Female and the powerful Tahoe 23B. We can't get enough of this sweetheart. Pick her up sale day, sit back and watch her develop into a foundation female. You might want to put a show halter onto her too and head for Bonanza in Lindsay next year. **Consigned by Iris Creek Farms.**



ICF GEMINI 23B 203J

▼ Female ▼ PC03081804 ▼ ICF 203J ▼ Feb. 3/21

SHF TAHOE R117 T100
 ANL C HAR T100 TAHOE 86 ET 23B
 ANL 7N MAPLE 86R
 NJW 73S M326 TRUST 100W ET
 ICF GEMINI 100W 117D
 ICF TITANIUM GEMINI 211W

47

EPDS	CE	BW	WW	YW	MILK
	-0.7	5.3	66.3	105.4	29.8



Dam

Length, udder quality and correctness all come to the top of our mind when we think about this cow. Things start to get even more exciting when you think about the calf that will come from the combination of her maternal strength and the power that Empower brings to the table. **AI bred to Harvie OVHF Empower ET 5F on March 21, 2021. Due to calve on January 1, 2022. Preg checked safe to this mating. Consigned by Iris Creek Farms**



ICF MEGAN 719T 105E

▼ Female ▼ PC03042169 ▼ ICF 105E ▼ Feb. 5/17

DRF JWR PRINCE VICTOR 71I
 TH 122 71I VICTOR 719T
 KBCR 19D DOMINETTE 122
 ICF SUTTON 36N 303S
ICF MEGAN 303S 330X
 ICF MEGAN 005 224R

48

EPDS	CE	BW	WW	YW	MILK
	4.2	1.5	52.6	80.6	24.3



Service Sire

Dependability is the first thing that comes to mind when we think about why you need this cow in your herd. Her 13 year old grand dam is still a top producing cow. Her dam is the type of cow you can count on year after year to have the calf you go find for visitors to see. Finally, just look at her and appreciate that tidy udder, bold rib and a spectacular calf at her side. **AI bred to H RW All In 7165 ET on March 28, 2021. Due to calve on January 7, 2022. Preg checked safe to this mating. Consigned by Iris Creek Farms.**



ICF NINDAWAYMA 23B 109F

▼ Female ▼ PC03048616 ▼ ICF 109F ▼ Jan. 9/18

SHF TAHOE R117 T100
 ANL C HAR T100 TAHOE 86 ET 23B
 ANL 7N MAPLE 86R
 GROSVENOR TITANIUM 80P 303T
 ICF NINDAWAYMA 303T 105Z
 ICF NINDAWAYMA 152M 103U

49

EPDS	CE	BW	WW	YW	MILK
	0.8	3.8	61.0	100.5	26.4

▼ BW: 80 lbs. Letting this one go will sting come sale day. The Trust females never disappoint and she stands alongside of a mother that has already proven herself. Her thickness, combined with that attractive look, will make her another great Bonanza 2022 candidate. She tops all that off with a tremendous set of EPD's across the board. Consigned by Irls Creek Farms.



ICF NINDAWAYMA 100W 108J

▼ Female ▼ P003092152 ▼ ICF 108J ▼ Jan. 8/21

KCF BENNETT 3008 M326
NUJ 735 M326 TRUST 100W ET
NJW P606 72N DAYDREAM 735



EPDS	CE	BW	WW	YW	MILK
	1.9	3.6	63.1	107.1	30.8

The five of us rarely reach a consensus on which of our donor cows is the best but we assure you her mother is always on the shortlist. If it wasn't for a standout full sister we are retaining and some embryo siblings on their way, this female would not be for sale. She has a look that will make you circle back to her pen come sale day. She bred way along to the new and exciting Bolder bull. AI bred to CSC 701 Bolder 901 on April 2, 2021. Due to calve on January 12, 2022. Preg checked safe to this mating. Consigned by Iris Creek Farms



ICF NINDAWAYMA 27A 108H MDC

▼ Female ▼ PC03071819 ▼ ICF 108H ▼ Jan. 8/20

NJW 73S W18 HOMETOWN 10Y ET
 NJW 135U 10Y HOMETOWN 27A
 NJW 4037 34S DURANGO VACA 135U
 GROSVENOR TITANIUM 80P 303T
 ICF NINDAWAYMA 303T 329Y
 ICF NINDAWAYMA 303S 323U

50

EPDS	CE	BW	WW	YW	MILK
	-3.0	4.3	63.0	99.6	28.6

One of the most powerful bred heifers we've ever raised and out of our best cow family. Her dam and granddam have never let us down and we don't expect anything less from her. Whether it be a heifer or bull calf she is carrying, she is sure to pass on her power and performance. **AI bred to CSC 701 Bolder 901 on April 3, 2021. Due to calve on January 13, 2022. Preg checked safe to this mating. Consigned by Iris Creek Farms.**



ICF WILMA 501C 218H

▼ Female ▼ PC03071776 ▼ ICF 218H ▼ Feb. 18/20

CHURCHILL RED BULL 200Z
CHURCHILL KICKSTART 501C ET
HVH OKSANA 4L 33N

NJW 73S M326 TRUST 100W ET
ICF WILMA 100W 220D
ICF WILMA 16R 207B

51

PE	CE	BW	WW	YW	MILK
-0.9	3.6	62.8	105.6	23.2	

Not a lot needs to be said here. This cow has made her mark across the world and solidified that by being crowned "Miss World" last year. Add in United, the Supreme Champion Bull from the Cattlemen's Congress, and this calf is sure to be exciting. P.S. The recip carrying this embryo is a very respectable cow herself. She is registered and could easily be used as a purebred female. **Recip is due to calve on January 1, 2022. Consigned by Iris Creek Farms**



PREGNANT RECIPI

HAROLDSON'S UNITED 33D 36G X HARVIE MS FIREFLY ET 35Z

HAROLDSON'S UPGRADE T100 33D
 HAROLDSON'S UNITED 33D 36G
 HAROLDSON'S WLC MIRA ET 52B
 NJW FHF 9710 TANK 45P
 HARVIE MS FIREFLY ET 35Z
 HARVIE MISS NYLON 1Y

52

PE	CE	BW	WW	YW	MILK
-3.6	6.1	62.5	105.9	30.1	



Sire of Pregnancy



Purebred Recip

CONSIGNORS

Andrew Angus

35934 Zion Rd RR 3, Lucknow, ON N0G 2H0
Warren Andrew: 519-395-3699
Eric Andrew: 519-525-2215
warrenandrew@hurontel.on.ca

Lot 43, 43A

Breezy Knoll Livestock

Josh Heyboer
12886 Green Line, RR 1, Ridgetown, ON N0P 2C0
519-359-9299
hheyboer@bell.net

Lot 40

Deacan Ridge Farms Inc.

Dean & Candy Ribey
911 Bruce Conc 12, Paisley, ON N0G 2N0
519-881-5659
deacanridge@gmail.com

Lot 37, 37A

DSMR Stock Farm

Doug & Rob Marriot
38637 Amberley Rd RR 3, Wingham, ON N0G 2W0
519-357-6183
gotbeef@rogers.com

Lot 41

Ellsmere Farms Ltd.

Jamie Ellis
78 Rabbit Square Rd RR5, Canning, NS B0P 1H0
902-680-8595
farmboyrx@hotmail.com

Lot 27

Gilchrist Farms

Brad, Kristie, & Peyton Gilchrist
1269 Grey Ox Ave RR 5, Lucknow, ON N0G 2H0
519-440-6720
brad@gilchristfarms.com

Lot 1-17

Harprey Farms

Allan & Donald Hargrave
307483 Centre Line A RR 2, Proton Station, ON
N0C 1L0
Allan: 519-375-5541
Don: 519-375-1500
Jarrett: 519-374-5516
harprey@gmail.com

Lot 25

Iris Creek Farms

Bruce, Heather, Bryce, Kent & Taylor Ribey
1073 Con 12, R.R. #4, Paisley, ON N0G 2N0
Bruce: 519-353-8405
Heather: 519-389-7745
Bryce: 519-389-1571
icf@bmts.com

Lot 44-52

Koyle Farms

Dwight & Martin Koyle
33429 Sixth Line, Iona Station, ON N0L 1P0
Box 159, McLean, SK S0G 3E0
Dwight: 519-670-8314
Martin: 306-519-7789
cdkoyle@gin.net

Lot 28

Leela Farms

John & Harry Leeflang
673 Drummond Conc 1, Perth, ON K7H 3C3
613-267-4429
613-267-7799
613-812-4429
leelaholst@ripnet.com
Lynden Manor Farm
Glen and Caroline Smith
Box 191, Carlisle, ON L0R 1H0
416-526-5428
905-690-6626
g.smith@merit-insurance.com

Lot 34-36

Otter Creek Farms

Douglas (DJ) Cook
3480 Highway 38, Odessa, ON K0H 2H0
613-372-5624
dj@ottercreekfarms.ca

Lot 42, 42A

Premier Livestock

Peter Frijters
5164 Line 58, Milverton, ON N0K 1M0
Peter: 519-276-9314
peter@premierlivestock.ca

Lot 18-21

SCOMAC Livestock

Scott & Elizabeth MacDonald
4169 Highway 6, Hagersville, ON N0A 1H0
Scott: 519-820-1272
Elizabeth: 226-971-0015
scomaclivestock@gmail.com

Lot 31-33

Tambri Farms

Brian & Tammi Ribey
1060 Bruce Saugeen Line RR 5, Paisley, ON N0G 2N0
519-385-2673
tammi.ribey@gmail.com

Lot 22-24

Taylor Makey

5987 Line 81, Listowel, ON N4W 3G7
519-291-8092
gmakey@mfsltd.ca

Lot 30

Tullamore Farms

Bill & Sylvia Jackson
12201 Torbram Rd, Caledon, ON L7C 2T4
P: 905-843-1236
C: 647-990-2697
tullamore.angus@gmail.com

Lot 38, 39

Walkerbrae Farms

The Walkers
5524 Wellington Rd 86, Guelph, ON N1H 6J4
C: 519-994-3252 Brent
C: 519-994-3256 Scott
walkerbraefarms@hotmail.com

Lot 26, 26A

TERMS & CONDITIONS

TERMS: The terms of the sale are cash or cheque, payable at par at the sale location. The right of property shall not pass until after settlement has been made; no invoicing on buyers in attendance unless previous arrangements have been made. Every animal sells to the highest bidder and in cases of disputes, the auctioneer's decision will be final. Announcements from the auction block will take precedence over the printed matter in the catalogue. Current exchange rates will be announced sale day. All monies are in Canadian funds.

CERTIFICATE OF REGISTRATION: Each animal will carry papers issued by the Canadian Angus Association unless otherwise stated. A certificate of registry duly transferred will be furnished to the buyer for each animal after payment has been made.

HEALTH: All animals in the sale have met all necessary health requirements.

PEDIGREE ESTIMATES: Pedigree Estimates (PE) are created on the projected mating of the animal's sire and dam based on averages of the two, creating estimated values that do not hold the same accuracy of actual EPDs issued from the association and should be used as such.

GUARANTEE: Each animal becomes the purchaser's risk immediately after the animal is sold. All animals in this sale will be sold under the terms and guarantees set forth by the Canadian Angus Association with regard to health, freedom from defects and from both reproductive and specific genetic unsoundness.

PREGNANCY INFORMATION: All serviceable age females have been pregnancy examined by an accredited veterinarian, giving an estimated length of gestation. This estimated gestation period shall be used only as a guideline to calving and is not a guarantee of actual service.

LIABILITIES: All persons attend the sale at their own risk. The seller, facility owner and sale manager assume no liability legal or otherwise, for any accidents that occur. It is understood that T Bar C Cattle Co. (2013) Ltd. is acting only as a medium between buyer and seller and is not responsible for any failure on the part of either party to live up to his obligations. Neither does T Bar C Cattle Co. (2013) Ltd. assume any financial obligations to collect or enforce collection of any monies between parties and any legal action that may in exceptional cases be taken must be between the buyer and the seller. T Bar C Cattle Co. (2013) Ltd. assumes no responsibility for any credit extended by the seller to the buyer. The buyer must look to the seller for fulfillment of all guarantees and representations made hereunder.

DELIVERY: Every assistance will be given in getting your purchases home. Each animal becomes the risk of the purchaser as soon as sold.

PHONE, MAIL, WIRE BIDS: Bidders unable to attend the sale may phone, wire or mail their bids and instructions to the sale manager, auctioneer or special representatives. Bids must be received in sufficient time prior to the sale.

INSURANCE: We strongly recommend that insurance is purchased for full value.

ERRORS: All announcements at sale time, written or oral, supersede any written material in the catalogue.

**Return Undeliverable
Canadian Addresses To:**

T Bar C Cattle Co. Ltd.
Box 2330
Warman, SK S0K 4S0



CREATED BY:

